



# Clinical rotations

# Student exchange

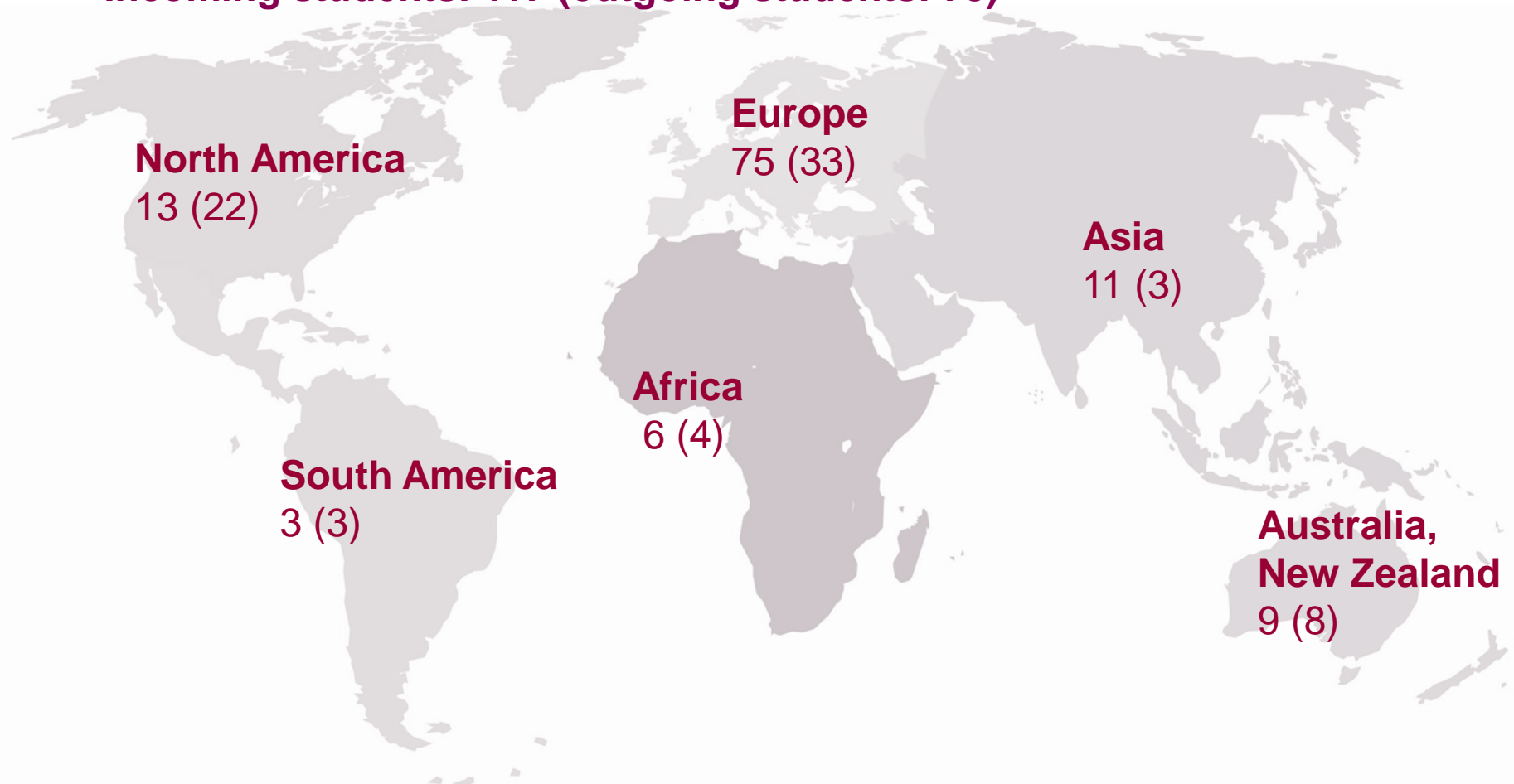
- Approximately 60 agreements
- Nordplus, Erasmus+, Linnaeus-Palme, INK

## Students:

- 2009/2010: 83 outgoing \* 77 incoming
  - 2010/2011: 80 outgoing \* 105 incoming
  - 2011/2012: 72 outgoing \* 101 incoming
  - 2012/2013: 73 outgoing \* 117 incoming
-

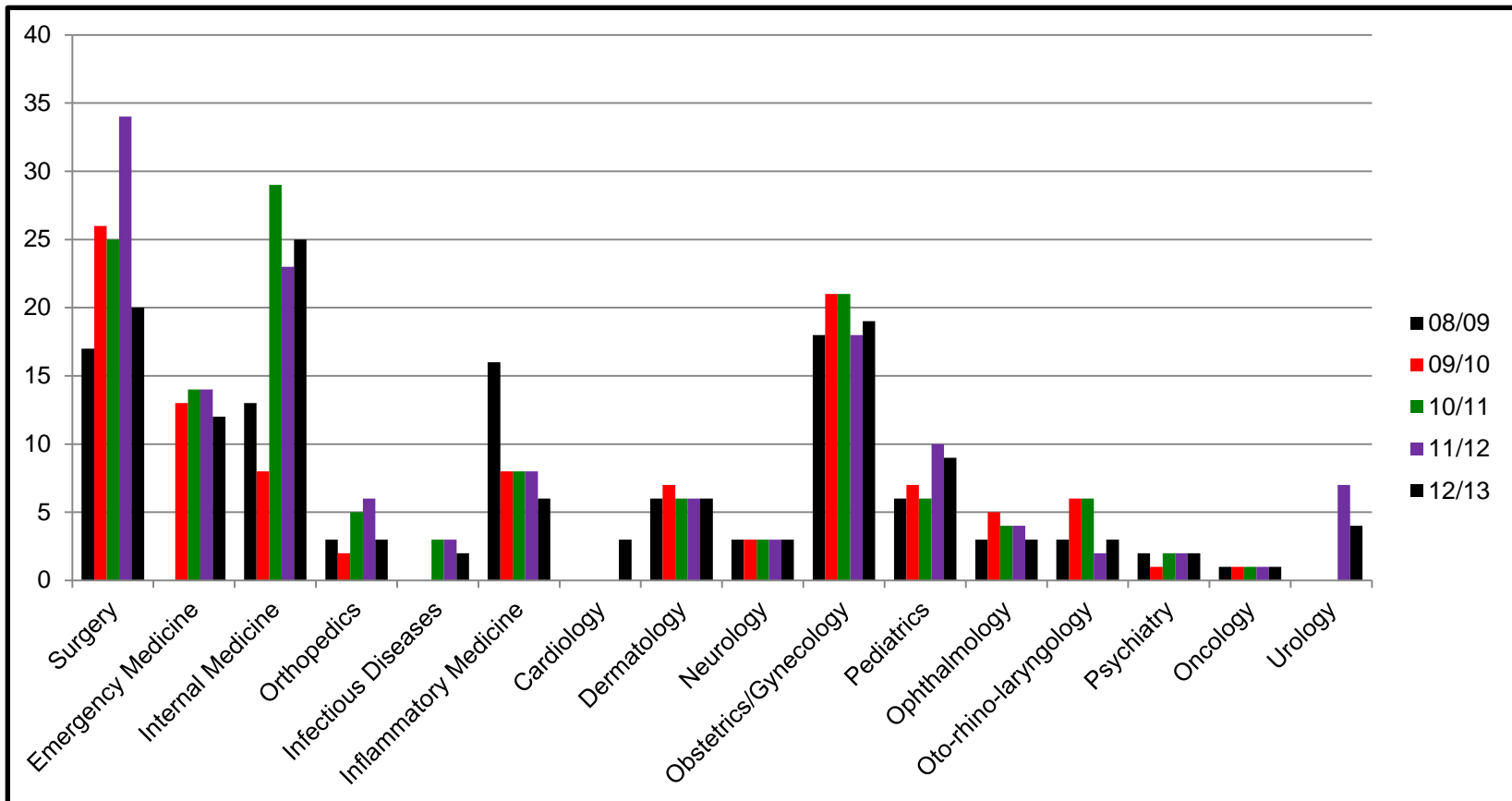
## Student exchange at KI 12/13

Incoming students: 117 (outgoing students: 73)



- In a structured way
  - 4 weeks blocks
  - Syllabi
-

## Number of performed clinical rotations 2008/2009-2012/2013





# Policy clinical rotations

- Necessary to make the exchange work within the study programme in Medicine
  - Medical educations are all different
  - Requested by the partner universities and students
  - Are offered in 4 weeks blocks
  - Each rotation has got a syllabus
-

# Policy clinical rotations

## Course responsible

- **Defines the goals and methods within the subject**
  - **Substantiates** the syllabus in a check list/core curriculum
  - Has an overall responsibility
  - **Can delegate** the responsibility for supervision
  - Introduction & regularly feedback
  - Written tasks strongly recommended (eg logbook, case-write ups, case seminars)
  - **Grade/Evaluation**
-



# Grades

- Syllabus – objectives:  
*by the end of the course the student should be able to...*
- Assessment – by the responsible for the course

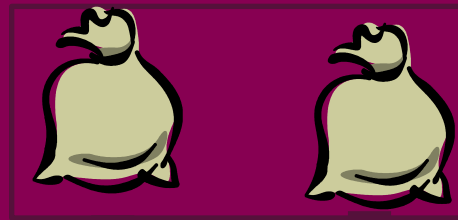
Item	Pass/Fail
Attendance & punctuality	
Participation & initiative	
Progress in knowledge & understanding	
Progress in skills & abilities	
Overall judgement	
Further comments	

# Clinical rotations

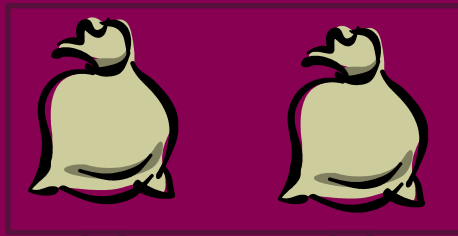


Karolinska  
Institutet

Government



Karolinska Institutet



KI departments  
1893 SEK/  
student/week  
Approx. 210 Euro



County council, clinics at  
hospitals, **not KI**  
ca 2466 SEK/  
student/week  
ca 274 Euro



More information [www.ki.se/exchangestudies](http://www.ki.se/exchangestudies)

---